

ORDER REFERENCE

SR / NV - 300 - PZ - I - g - p

- SR expansion box
- NV expansion box
- 300 size
- PZ throttle controlled from outside
- I insulated
- g top connection
- p Additional accessories
 - P - mounting crossbar

DESCRIPTION

SR/NV are expansion boxes for NV diffusers. They stabilize the air-flow and ensure uniform air supply to the diffuser. Expansion boxes connect diffusers with ventilation installation. They are made of zinc-coated sheet, joint by non-welded Click-Clock connection.

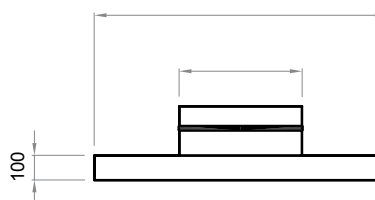
Expansion boxes can be connected to the ventilation installation through the side or top. Boxes can be thermally and acoustically insulated from the inside by K-Flex rubber mat. Upon customer's request we can make other types of expansion boxes accordingly to provided drawings.

In standard expansion boxes are equipped on the ferrule with machine crimped rubber gasket.

STANDARD SIZES

size	300	400	500	600	625
A [mm]	295	395	495	595	620
H [mm]	260	300	300	350	420
Ød [mm]	158	198	198	248	313
ØD [mm]	295	395	495	595	620
i [mm]	130	150	150	175	175

PS - SPIRO TRANSITION



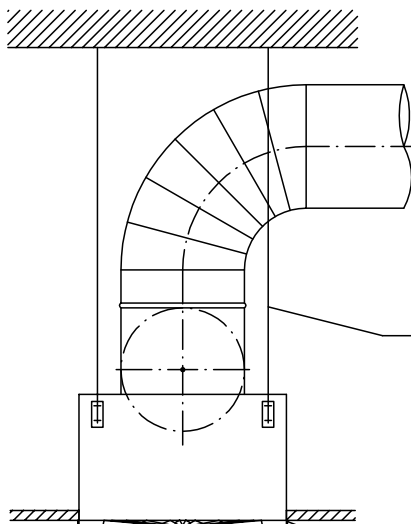
INSTALLATION

Expansion boxes SR/ KWRD are designed for installation between the ceiling and underslung ceiling. Prepare an installation hole of a size of ØD or AxA. The box can be mounted onto the ceiling by appropriate hangers (bars, pins...) and installation slings. If installing in the underslung ceiling, mount the expansion box in so that edges stick out by approx. 12 mm from the ceiling plane.

Upon customer's request, boxes can be equipped with

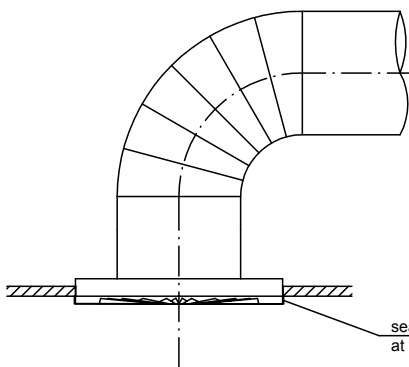
1. factory slings
2. a crossbar that allows for installation of the front panel with one central screw

INSTALLATION IN THE FULL UNDERSLUNG CEILING



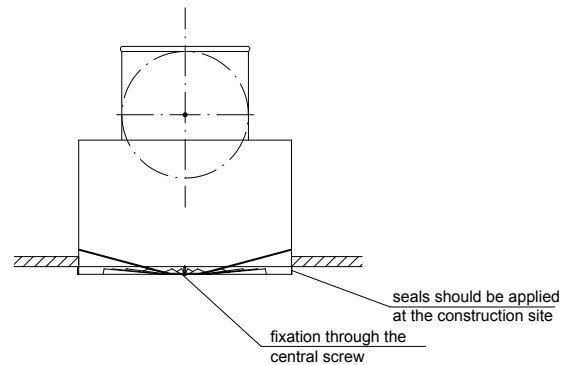
seals should be applied at the construction site

INSTALLATION WITH ADAPTER FOR SPIRO



seals should be applied at the construction site

INSTALLATION WITH THE CROSSBAR AND THE SCREW



INSTALLATION IN PANEL CEILING

